

BECKER



BECKER protected
steamer workplace



INFORMATION

Air extraction

10-5A
EN

2018

In a CSSD (RUMED), the use of steam-cleaning equipment achieves excellent instrument cleaning results while going easy on materials. When initial cleaning work is carried out manually, adequate protection of the staff against loose particles, aerosols and hot steam must be ensured at all times. **BECKER steamer workplaces provide dual protection:** Safe use of the steam cleaning unit in an enclosed work area with a protective shield plus supplementary aerosol extraction. Air extraction is achieved using either a recirculation system or by connection to the building's existing air extraction system.

Ready-to-install tall cabinet

Lower cabinet element with a pair of hinged doors and ventilation openings; interior special chromium-nickel steel drawer with ledge handle, fully extensible, for mounting the steamer unit and storing accessories.

The user-friendly working area located above the cabinet element allows hygienically safe and efficient use of the steam cleaning equipment. This area is equipped with a basin recessed into the profile edge, a cleaning water jet gun that can be autoclaved and an integrated hand jet for operating the steamer unit. Steam is extracted and the condensate is drained via the removable grille located at the rear.

The vertical position of the protective shield can be adjusted individually and ergonomically to suit the working position. LED illumination of the work area – operated via the on/off switch on the top front panel of the cabinet – ensures good lighting, particularly for difficult tasks.

Steamer unit

The powerful steamer unit is installed in the lower cabinet, a connected hand jet is located ready for use on the work-top. This has a spray jet that can be exchanged by means of a Luer-lock feature allowing direct connection to hollow instruments. Other accessories are also available. When connected to an existing de-ionised water supply, this steam cleaning unit does not require pauses for re-filling, thus ensuring fast, smooth cleaning at the required pressure. The compressed-air function is an option.

Absorber

An absorber (of chromium-nickel steel) is used to both minimise steam condensation and to improve personal protection. Steam enters the absorber, and the sophisticated absorber design regulates steam flows, thus reducing steam reflux considerably.



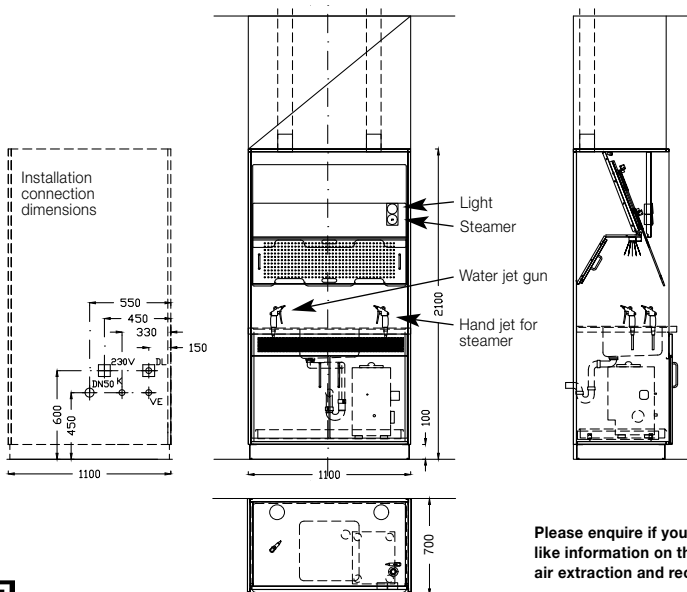
BECKER protected steamer workplace

- for optimum cleaning results
- best possible staff protection
- hygienically safe, easy-to clean and easy-to-disinfect workplace (approved procedure)
- removable, extract air grille and absorber, can be processed in WD
- ready-to-install, to be connected to existing outlets on site

Technical specifications

Cabinet element material	chromium-nickel steel AISI 304 (1.4301)
Protective shield material	Makrolon, UV-hardened, resistant to scratching and cleaning agents
Steamer	8 bar steam pressure, pressure tank volume 5 l, pressure ranges that can be set individually, protection against dry operation, complies with all required safety provisions, 220-240 V, 50-60Hz
Moisture-proof lamp	LED, high power 3000K/4000K incl. ballast unit (IP65), 1000 Lux
On-site connections needed: cold water and de-ionised water supply	max. 6 bar (gun max. 5 bar), cut-off valve, R 3/4" connector with male thread, for flat washer. If only one (cold water) connection is available, a chromium-plated right-angle valve with two 3/4" (DN 20) connections must be provided on site.
On-site waste water connection required	DN 50 waste-water drain connection
On-site med. compressed air connection required	compressed air connector, not less than 4 bar and not exceeding 6 bar
On-site electric power supply required	230 V AC - 50Hz, 16 Ampere fuse
Services to be provided by client for connection to the building's air extraction system	Extraction rate: 2 x 225 m ³ /h (ø 100 mm) by in-duct fan (approx. 10 m air extraction duct with gradient and water drainage to be provided). Connection and scope of delivery to be agreed by client and contractor.

Connection to existing air extraction system



Please enquire if you would like information on the version with air extraction and recirculation.

PRODUCT ENQUIRY

- | | |
|--|-------------------|
| <input type="checkbox"/> BECKER protected steamer workplace
1100 x 700 x 2100 mm height,
incl. 400 x 400 x 200 mm basin | VH200 67 110 SAP1 |
| <input type="checkbox"/> Steamer | 210-32 / 210-33 |
| <input type="checkbox"/> Compressed air connections for steamer | 210-32DL / 255-50 |
| <input type="checkbox"/> Steamer fittings (8 adapters) | 210-37 |
| <input type="checkbox"/> Absorber | 210-42 |
| <input type="checkbox"/> Cleaning water jet gun, autoclave-suitable | 257-06 |

