



BECKER

Becker endoscope reprocessing station, height-adjustable



INFORMATION

height-adjustable

10-3H
EN

2018

Becker endoscope reprocessing station, height-adjustable



Becker's endoscope reprocessing station comprises the tried and proven Becker endoscope sink, integrated into a height-adjustable work table, and is designed for continuous use by different members of staff.

Ergonomic, user-friendly height adjustment is an outstanding feature of the **Becker endoscope reprocessing station** and helps to achieve the **optimum cleaning process**.

Work table

The height of the ready-to-install work table can be adjusted within a range of 900 mm to 1100 mm by means of a self-contained, maintenance-free electro-hydraulic system that can be operated from the front of the table. The height can be adjusted freely without increments and 4 memorised heights can be set by pressing a button. The cabinet elements can be individually selected from our wide range of furniture. The integrated rear panel (which includes water supply fittings) allows ready-to-install direct assembly. Any other required accessories such as storage trays for leak testers can be individually attached to the rear panel using magnetic mountings.

Table top with endoscope sink

Optimum, hygienic cleaning results are achieved since the endoscopes are held in an extended position and the bottom of the sink slopes towards the drain. The slope ensures that the fluid drains off completely. The space-saving, elegant arrangement of two basins provides an efficient and optimum solution. Seamless work top of pore-free, polymer-bound VARICOR® mineral material which is resistant to chemicals and disinfectants. CE marking in accordance with DIN EN 14688. Colour can be individually chosen from our colour range.

Dosing device with feed tap

The concentration of the cleaning solution is precisely controlled by means of the integrated dosing device. The control panel is located on the front of the cabinet under the work top. The special feed tap can be used to fill both sinks.

Cleaning spray guns

Spray guns are a preferred tool for intermediate rinsing. Best possible hygiene results are achieved using these guns, which can be sterilised in an autoclave.

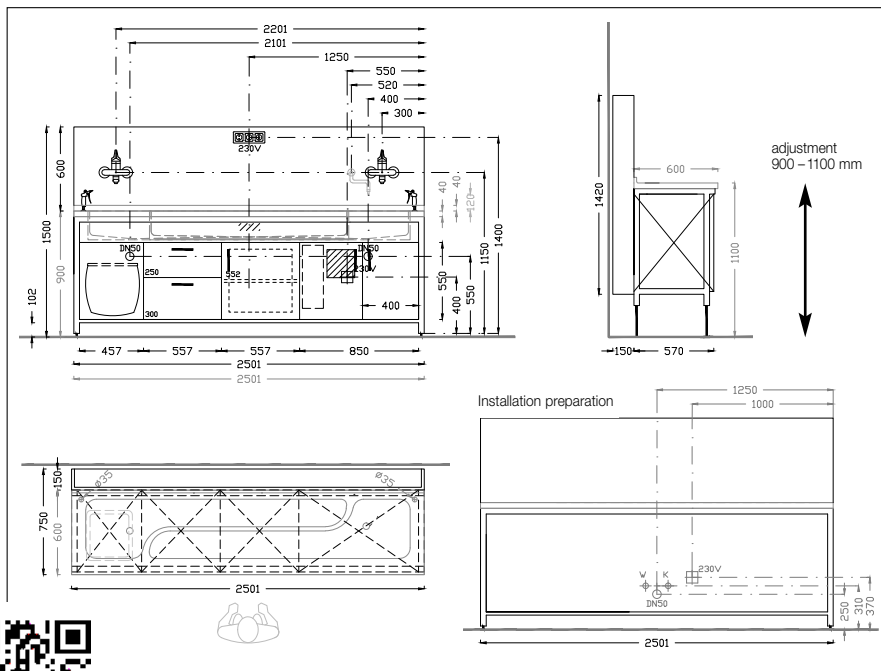


Becker endoscope reprocessing station, height-adjustable

- Height adjustment without discrete steps allows perfect adjustment of the work top heights to suit every member of staff
- Sink shape is easy on materials and ensures safe processing
- Optimised cleaning results
- Gentle on the endoscopes during processing since they are held in an extended position
- Cleaning and hygiene: smooth surfaces, rounded-off corners and edges
- Magnets accessory range
- Ready-to-install thanks to pre-assembled system
- Direct installation possible

Requirements

The technical requirements on the installation location must be met. Please contact us if an additional network connection is needed.



| Technical data | |
|-------------------------------|--|
| Work table, height-adjustable | 2501 x 750 mm, 1500 – 1700 mm height Table with a single sink: 2087 x 750 mm, height 1500 – 1700 mm; Work top height adjustable, 900 to 1100 mm |
| Internal dimensions of sink | Top: length 1849 mm, width 420/195 mm, depth: 166 – 188 mm |
| Sink drain | Without overflow, with chromium-nickel steel standpipe valve |
| Dosing device | Microprocessor-controlled, additive ratio 0.25 – 3 %, neutral to media used |
| Cold/hot water connection | device side: 1/2" pipe thread installation site: 1 x cold water and 1 x warm water, each with a shut-off valve, 1/2" connector fitting with male thread, flat seal; connection facing upwards |
| Electrical power supply | 230 V AC, 50 Hz, 16 A device side: 1m/4m power cable with protective-earth-contact plug installation site: flat recessed mains outlet |
| Waste-water | device side: DN50 siphon – wall installation site: DN50 connecting sleeve |

